



we are
where
history
meets
the future



214,673
DRAWINGS

42

COUNTRIES WHERE
SYSTEMS ARE INSTALLED



138

YEARS OF EXPERIENCE

2020
edition



1882

WEARETHEPEOPLE

Having an accumulated experience of more than 200 years in the global pump market, led us to revive the pump range of Aversa with contemporary rational criteria in conjunction with the market demands.

AVERSA - DPPUMPS provides both standard and custom made pumps, the quality of which has been frequently recognized at national and international fairs.

Our program includes :

A big range of centrifugal pumps which are suitable for several applications in a power plant, such as:

- ✔ Vertical pumps for Cooling (main & auxiliary)
- ✔ Concrete Volute Pumps for Cooling
- ✔ High pressure boiler feed pumps (electric driven)
- ✔ Condensate extraction pumps
- ✔ Desalination intake
- ✔ All miscellaneous pumps (like horizontal pumps end-suction type, sump type vertical pumps, axial split casing pumps etc.)

Specialized pumps for all kinds of infrastructure projects like irrigation, flood control, drainage and dewatering, having our specialty but not limited in:

- ✔ Vertical Turbine & Mixed Flow Pumps
- ✔ Vertical Propeller Pumps
- ✔ Submersible Propeller Pumps
- ✔ Concrete Volute & metallic Pumps (engineered pumps series)
- ✔ A very big range of Split Casing Pumps (Horizontal and Vertical)

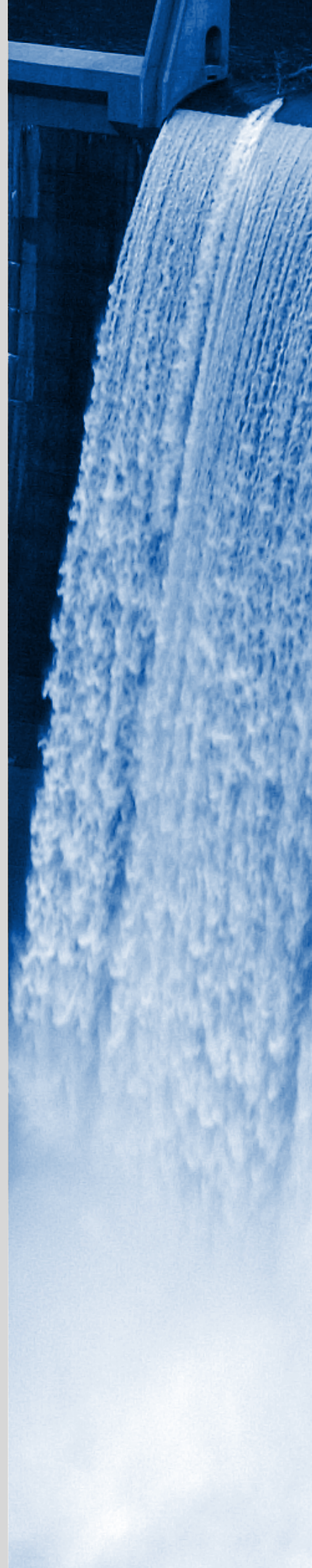
Many pump solutions for the Oil & Gas sector in several applications like:

- ✔ Horizontal Process pumps (several types in compliance with API-610)
- ✔ Vertical Mixed Flow pumps for sea water (or fresh water) cooling
- ✔ Condensate pumps
- ✔ Several special designed sump pumps and all kind of miscellaneous pumps

Our facilities include the manufacturing & assembly factory, one of the largest test bench in the Balkan region and our foundry capable to produce a big range of alloys including Duplex & Super Duplex grades.

For more information you are welcome to visit our web site at <http://www.aversa-dppumps.ro> or to contact us.

We are a knowledge based organisation.



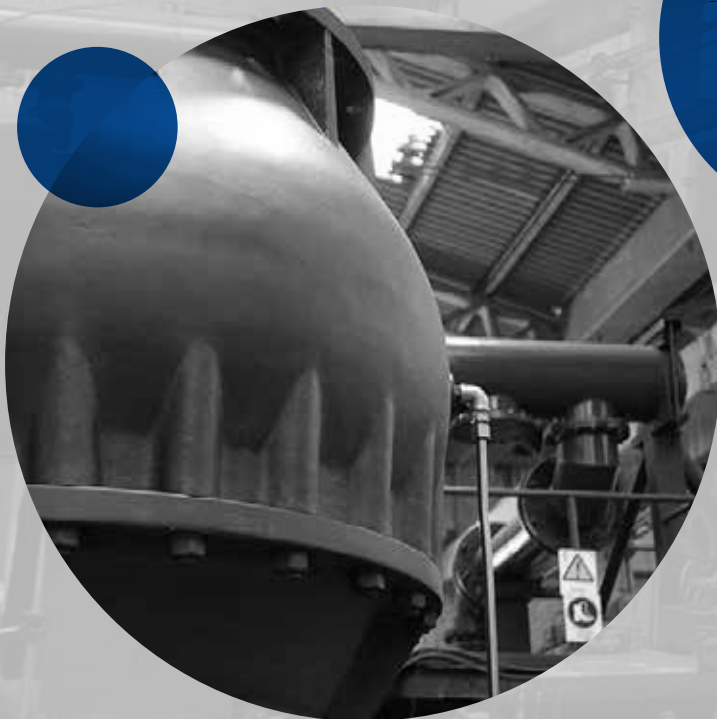


excellence
is not an act,
but a habit.

Aristotle

Greek Philosopher
(384 BC - 322 BC)

THINKERS&MANUFACTURERS





7



● BUCHAREST



THESSALONIKI ●

ATHENS ●



● NICOSIA



PLANT



FOUNDRY



OFFICES

A SOLUTION FOR EVERY INDUSTRY

POWER GENERATION

In the demanding market of power plants and desalination plants, AVERSA - DP PUMPS offers an extensive range of innovating products and services. Whatever the type of power plant we are able to deliver, cooling water and auxiliary pumps, condensate extraction, custom made fire fighting sets & several miscellaneous pump sets. We are also able to provide special Duplex Steel grade pumps for desalination plants, vertical or horizontal from main intake up to most of the process stages.

INFRASTRUCTURE PROJECTS

The largest pumping stations of water supply, sewage, irrigation and draining in Greece are equipped with AVERSA - DP PUMPS products. Many of them have been sold for projects in Europe, the Middle East and the Far East. We are able to deliver "Tailor Made" pumps according the specific needs of every special construction project.

INDUSTRY APPLICATIONS

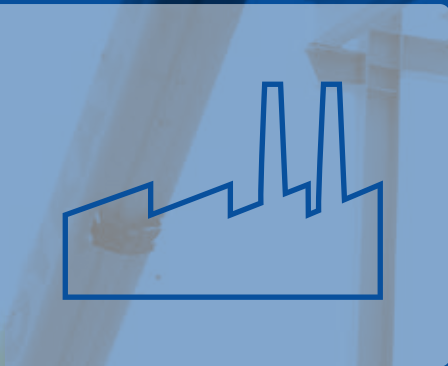
Pumps made of special alloys, such as Super Duplex and special austenitic grades stainless steel that are capable of pumping liquids at high temperatures, viscous media used in food and drink industry, steel processing e.t.c.

BUILDING SECTOR

AVERSA - DP PUMPS possesses a prominent place in international markets as it has supplied equipment to most prestigious and tallest buildings all over the world, such as the Central Plaza in Hong Kong, the Mega Export Center in Singapore as well as most of the Greek major buildings such as the Athens Concert Hall.

SHIPPING / SHIPYARDS

Our pumps can cover a variety of materials suitable for sea water application such as GBZ10, Ni-Al-Br, SS316 and Duplex, casted in our foundry facility. More specifically, our Stainless Steel Pumps of SS316 and Duplex Grade are widely sold and well recognized as the best in terms of quality worldwide.



RESEARCH&DEVELOPMENT

AVERSA - DP PUMPS is not mass production oriented company; it focuses on projects:

- Flexibility to meet each project special demands
- Design
- Material grades & combination
- Required documentation
- In many cases we offer not only a pump but an application solution
- Support to our customer during and after the project
- Detailed Drawings
- Installation advisory
- Providing commissioning engineers

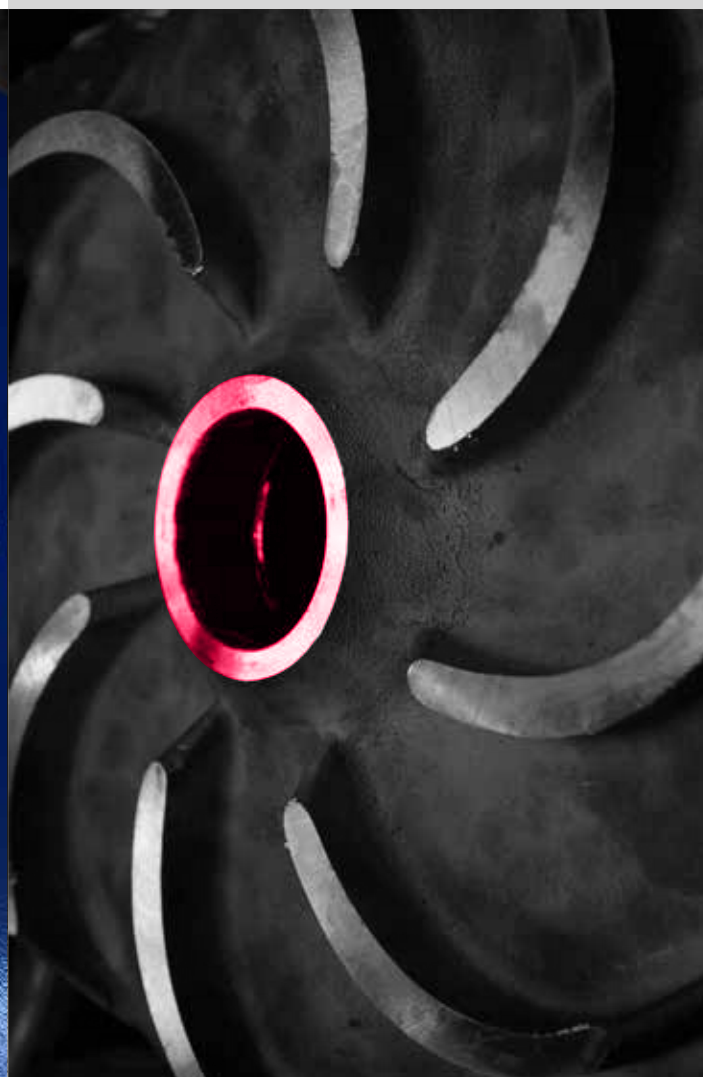
Our Technical / Engineering Department's accumulated experience reflects to customer demands.

Our strong points:

- Know - How
- 138 years making pumps for projects

R & D

- Product development
- Continuous updating new types and sizes of pumps
- Collaboration with several technical universities for pump performance improvement
- Adoption of technological evolution in our products





11



TESTING THE BEST

Types of Tests Available

- Performance Test - applicable std ISO 9906 / HI 14.6 (tolerance grade upon agreement with the customer)
- Hydrostatic Test
- NPSH test - applicable std ISO 9906 / HI 14.6.
- Submergence Test
- Vibration Test (Acc. ISO 10816-7)
- NDT (No Destructive Test)

HISTORYUNFOLDED

The factory first established its foundry and mechanical workshop in **1882**

At the beginning of the Second World War, the factory was occupied by the Army and changed its profile into arms production. The factory produced pieces for machine guns, for bombs and small campaign kitchens

In **1945**, at the Annual General Meeting, the board decided that the old factory should be repositioned. Frequent fires that affected Bucharest in 1945-1946 created an opportunity for shareholders, who perceive the market needs and begin to manufacture pumps for fire extinguishing.

By **1950** Aversa had evolved to specialize in the production of a wide range of pumps for the industrial, agricultural and energy fields. In 1955, the first prototype workshop was established and the testing stand created

After several mergers, the company changes its name into " Uzina de Pompe Bucuresti" in **1965** and focused exclusively on pump manufacturing and manufacturing spare parts for pumps

In **1977** there were over 3,800 employees working in the factory. They achieved the largest production in Aversa's history: 75,555 pumps in one year.

Starting with **1985**, the company was certified and started to deliver pumps for Cernavoda Nuclear Plant and Apa Grea (Heavy Water Plant) in Drobeta Turnu Severin.

As a supplier of goods and services for Romania's nuclear facility (CNE-Cernavoda), Aversa implemented in **1982** a Quality Assurance System for nuclear stations pumps of CANDU type.

During **1980 – 1991**, over 80% of the production was exported, the highest level of exports in the companies history.

AVERSA has developed and manufactured pumps for a wide range of applications in a variety of industries including: Refineries, Mining, Petro chemistry, Steel industry, Chemistry, Sugar industry, Cryogenics, Ship building, Conventional power plants, Construction, Nuclear power plants, Agriculture, Pulp and paper, Water supply and distribution, Food industry, general service.

In **2018** AVERSA became part of DP PUMPS - DRAKOS POLEMIS GROUP.



AVERSA

Σ

13

1882

PRODUCT RANGE

MV

Vertical Mixed Flow Pumps

- Capacity Up to 60000 m³/h
- Total Head up to 250 m
- Pull out design available (Custom Engineered pumps with higher capacities available)
- API 610 latest edition available (VS-1 type)



AV

Vertical Axial Flow Pumps

- Capacity Up to 60000 m³/h
- Total Head up to 10 m per stage
- Pull out design available (Custom Engineered pumps with higher capacities available)
- API 610 latest edition available (VS-3 type)



CVP-NA

Concrete Volute Pumps

- Capacity Up to 105000 m³/h
- Total Head up to 35 m
- Temperature up to 50° C
- Casing with Pre-Fabricated Concrete Parts or Steel Liner available
- Metallic Parts Pull Out Design



AVS

Submersible Axial Flow Pumps

- Capacity Up to 25000 m³/h
- Total Head up to 10 m

MVS

Submersible Mixed Flow Pumps

- Capacity Up to 13000 m³/h
- Total Head up to 20 m



NA/FV

Fabricated Metallic Volute Pumps

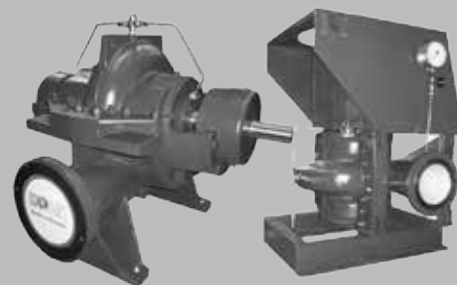
- Capacity Up to 60000 m³/h
- Total Head up to 100 m
- Mixed Flow for high capacities
- Radial Flow for high head
- Pre-Fabricated Parts
- Assembly at Site



AS, ASN, ASN-E, NDS, SIRET

Axially Split Casing Horizontal & Vertical Pumps

- Capacity Up to 15000 m³/h
- Total Head up to 240 m
- Max. Operating Pressure up to 25 bar
- Temperature up to 120° C



TA, CM, NPM, TERMA, RDT

Process (End Suction) Pumps

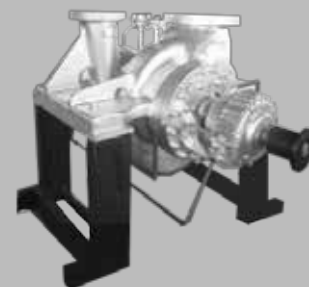
- Capacity Up to 2000 m³/h
- Total Head up to 250 m
- Max. Working Pressure 50 bar
- Heavy Duty design, acc API-610 latest edition available (OH-1 type)



RDC

Horizontal Process Double Flow Pumps

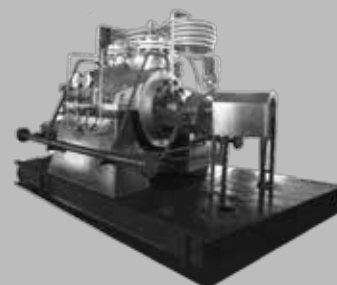
- Capacity Up to 2200 m³/h
- Total Head up to 320 m
- Max. Working Pressure 40 bar
- Temperature up to 350 °C
- Heavy Duty design, acc API-610 latest edition available (BB-2 type)



MM, MT, MET, MD, OLT

Multistage High Pressure Centrifugal Pumps

- Capacity Up to 1000 m³/h
- Total Head up to 2250 m
- Max. Working Pressure 250 bar
- Temperature up to 200 °C
- Heavy Duty design, acc API-610 latest edition available (BB-4, BB-5 types)



NAx, BRATES

End Suction Mixed Flow Pumps

- Capacity Up to 15000 m³/h
- Total Head up to 40 m
- Temperature up to 120° C
- Available in Horizontal & Vertical Arrangement

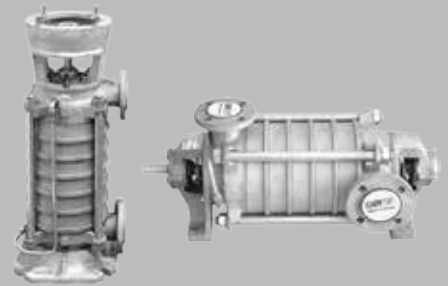


PRODUCT RANGE

MS, MS-E

Centrifugal Multistage Pumps

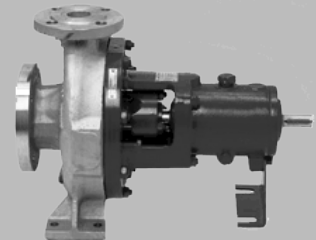
- Capacity Up to 550 m³/h
- Total Head up to 350 m
- Max. Casing Pressure up to 40 bar
- Temperature -20° C up to 140° C



MDP

End Suction Pumps according to ISO 5199 (DIN24256)

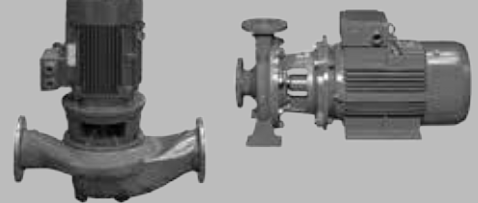
- Capacity up to 1600 m³/h
- Head up to 160 m
- Temperature up to 140° C
- Working pressure up to 16 bar



DP-BLOCK IL-N

Centrifugal Mono-block Single Stage Pumps, Single Stage In-line Pumps

- Capacity Up to 300 m³/h
- Total Head up to 90 m
- Max. Working Pressure 10 bar
- Temperature up to 140° C



LDP, LDP-X, NA Configuration VD

End Suction Vertical Pumps

- Capacity up to 2500 m³/h
- Head up to 150 m
- Temperature up to 140° C
- Working pressure up to 16 bar



LDP, LDP-X, NA Configuration VW

End Suction Vertical Pumps for Wet Installation

- Capacity up to 1000 m³/h
- Head up to 100 m
- Temperature up to 70° C
- Working pressure up to 16 bar
- API 610 latest edition available (VS-4 type)



LDP, LDP-X, NA

End Suction Pumps according to EN733 (DIN24255)

- Capacity up to 550 m³/h
- Head up to 100 m

Oversized End Suction Pumps

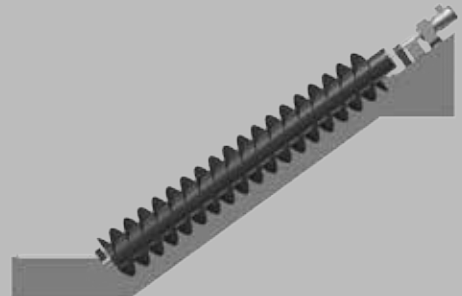
- Capacity up to 2500 m³/h
- Head up to 150 m
- Temperature up to 140° C
- Working pressure up to 16 bar



ARCHIMEDEAN

Archimedean Screw Pumps

- Capacity Up to 6 m³/sec
- Total Head up to 12 m
- Temperature up to 50° C
- Inclination from 30° to 38°



CP

Condensate Extraction Pumps

- Capacity Up to 10000 m³/h
- Total Head up to 400 m
- Special first stage for low NPSHr
- Mixed Flow for high capacities
- Radial Flow for high head
- API 610 latest edition available (VS-6 type)



SP

Sewage Pumps

- Capacity up to : 15000 m³/h
- Total Head up to : 80m
- Non clogging single or double and vortex type impeller



DWP, MA

Vertical Deep Well Pumps

- Capacity Up to 600 m³/h (standard construction)
- Total Head up to 260 m
- Setting 150 m
- Bowl Sizes 6" – 12" (bigger sizes as optional)
- Speed up to 3600 RPM
- API 610 latest edition available (VS-1 type)



PRODUCT RANGE

DIESEL FUEL SUPPLY / FEEDING SKIDS

Skid-Mounted system, Engineer - to - Order (ETO)

Designed and manufactured based on very specific customer requirements.

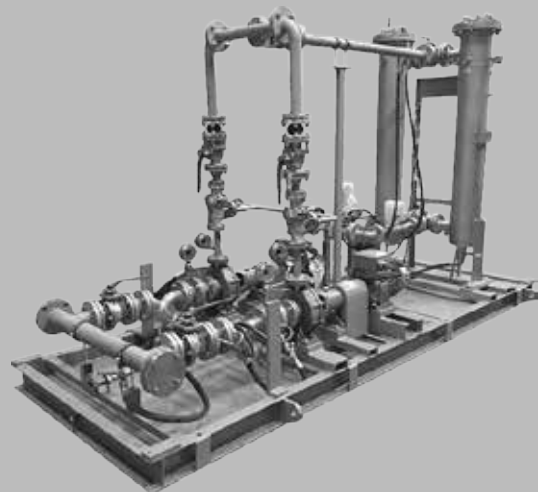
Applications:

- GT Fuel Feeding
- Diesel Oil Transfer

System Components:

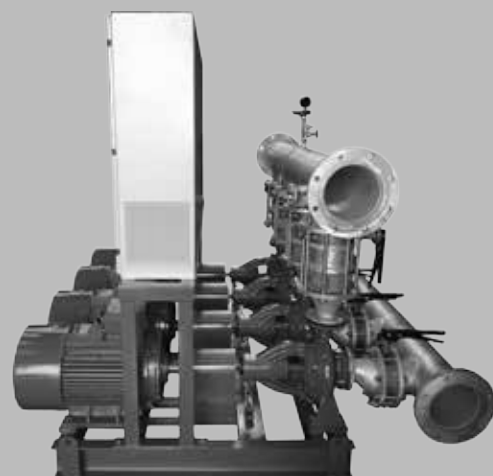
- Pumps
- Motors
- Control Panel
- Fuel Dual Filter (Filtration degree as per application specs)
- Pressure & Heat Transmitters
- Valves & Hydraulic Equipment
- Flow Meter (Custody Transfer available)

** All equipment is ATEX certified*



BOOSTER SYSTEMS

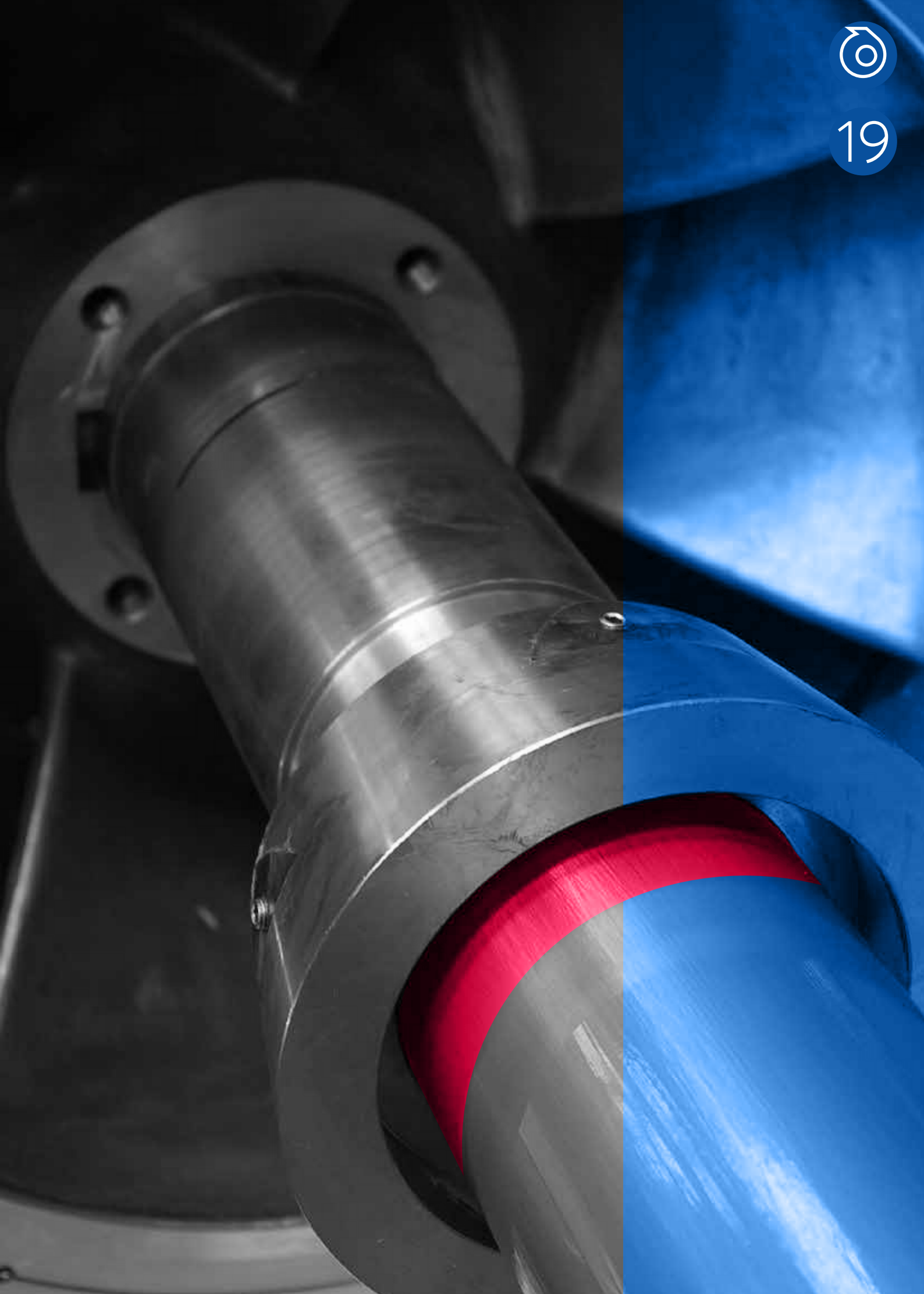
Booster systems are used when there is a need of pressure or capacity increase of the supply water. The basic operation of the systems, is achieved by the control of the main water through a digital function pressure switch (simple system) or analogue function pressure sensor (Systems operated with VFD). Sensor function starts and stops the system operation. Booster system varied upon technical specifications need, covering a wide range of applications.



FIREFIGHTING SYSTEMS

AVERSA - DP PUMPS manufactures COMPACT Firefighting systems covering wide range of applications such as residences, hotels, hospitals, Industries etc. All Firesystems complying to European regulations. AVERSA - DP PUMPS fire systems are skid mounted fire sets, pre-wired and tested at our testing facilities ready for operation. AVERSA - DP PUMPS also provides fire systems according to EN 12845.





GLOBALIMPACT

After 138 years of succesful business we wish to declare that we shall continue to work for the technical improvement and development of our designs, manufacturing pumps of high quality and performance standards, so that we maybe of the best possible service to the international pump markets.



Countries where AVERSA - DP PUMPS products are installed:

U.S.A.
CUBA
GREECE
U.K.
NETHERLANDS
BELGIUM
DENMARK
GERMANY
SWITZERLAND
AUSTRIA
ITALY

PORTUGAL
CYPRUS
CHECH REPUBLIC
ROMANIA
ALBANIA
NORTH MACEDONIA
SERBIA
LIBYA
EGYPT
NIGERIA
SOUTH AFRICA

LEBANON
SYRIA
JORDAN
IRAQ
KUWAIT
SAUDI ARABIA
OMAN
DUBAI
PAKISTAN
INDIA
SRI LANKA

THAILAND
MALAYSIA
LAOS
INDONESIA
VIETNAM
HONG KONG
SINGAPORE
SOUTH KOREA
PHILIPPINES



21



HEAD OFFICE

Gara Obor Blvd No. 8B, C.P. 3-19, Sector 2, 021747,
Bucharest, Romania

info@aversa-dppumps.ro
www.aversadppumps.com



MIX

Paper from
responsible sources

FSC® C130249

